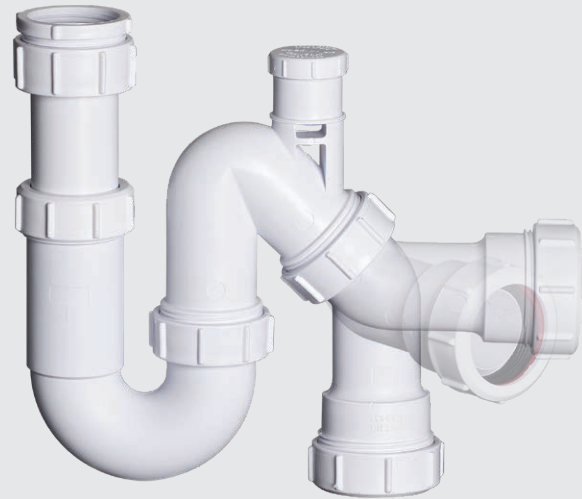


**M'ALPINE**

**Abey<sup>AU</sup>**

**Aussie Plumbers' First Choice.**





**McALPINE**

**Abey<sup>AU</sup>**  
THE TRADIES CHOICE

## Providing better quality and innovative plumbing solutions.

Abey Australia manufacture and source the best of breed plumbing products the world has to offer. Their range of McAlpine plumbing products provide plumbers superior quality plastic plumbing solutions to save them time, space and money.

Like Abey, McAlpine is a family owned company with a manufacturing history that goes back to 1902. In 1957 McAlpine was the first company in the UK to manufacture plastic traps revolutionising and streamlining the plumbing industry there.

Renowned as innovators in their field McAlpine have become Europe's market leaders producing an exceptionally wide range of products of the highest quality and export specifically designed products for use in over 80 countries including Australia. The relationship between McAlpine has grown and flourished with a growing range of high quality specialised products designed for the Australian market that meet the needs of the Australian plumbing industry.

McAlpine operates strict quality control systems within all its factories, which are located in the West of Scotland, and is committed to the continued supply of high quality products. As market leader, McAlpine has a reputation for producing innovative products determined by market conditions and customer demand.

Like McAlpine, Abey are an innovative manufacturer in their own right. Abey's knowledge of the Australian industry, respect for quality products and national distribution has proven to be a perfect match for two companies with a similar vision for producing high quality products for the plumbing industry.

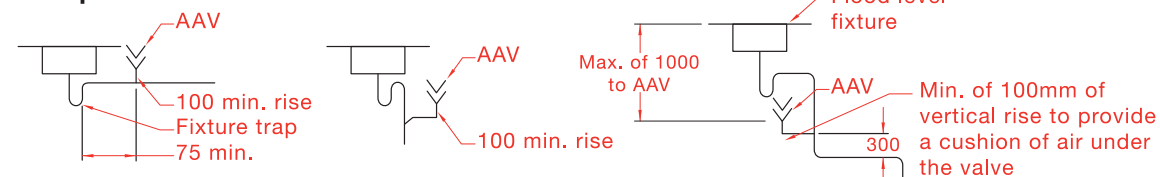
# Air Admittance Valves (Ventapipe).

Abey's Ventapipe Air Admittance Valves are for use in above ground drainage systems to enable ventilating pipes to be terminated within the building. Easier, faster installations are gained, negating the need for roof penetrations. Conforms to AS 2887:1993, AS/NZ 4936:2002.

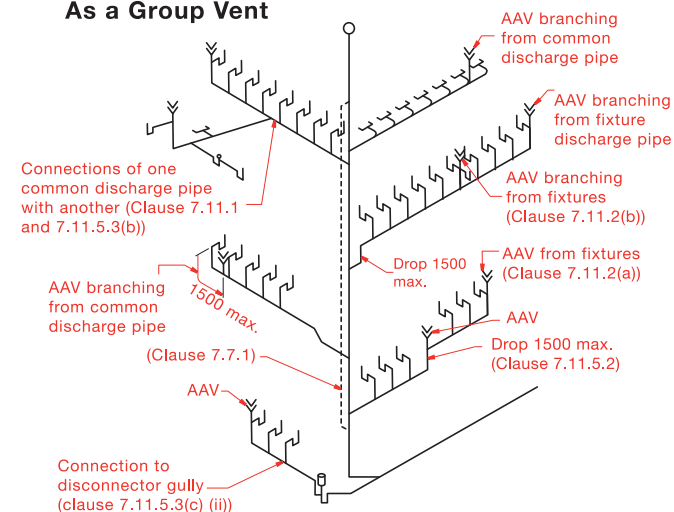
- ✓ 9L/S airflow capacity
- ✓ Prevents the release of foul air
- ✓ Reduces risk of syphoning
- ✓ Can be used in most internal situations
- ✓ Used in both new and existing systems
- ✓ Allows for greater design flexibility
- ✓ Reduces material and labour costs
- ✓ Rigorously tested
- ✓ Will not unseal



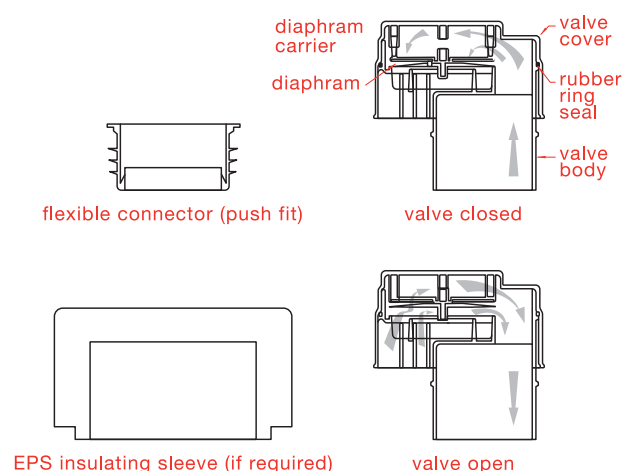
## As a Trap Vent



## As a Group Vent



## Ventapipe Air Admittance Valve



# Air Admittance Valves (Ventapipe).

## Ventapipe 100 and Ventapipe 50 Application

Ventapipe 100 and Ventapipe 50 Air Admittance Valves are for use in above ground drainage systems. They are designed to:

- Provide a means of ventilation to the drainage system under conditions of reduced pressure when ventilating pipes are terminated inside buildings in accordance with BS EN 12056-2:2000

## Operation

The two diagrams illustrate how Ventapipe functions. The valve diaphragm lifts and allows air to be drawn into the system when it is subjected to negative pressure. On cessation of negative pressure the diaphragm returns to the closed position thereby preventing the escape of foul air into the building.

The valve is designed to open and close spontaneously when required thereby allowing a supply of air to adequately ventilate the system thus ensuring a smooth discharge.

## Approval

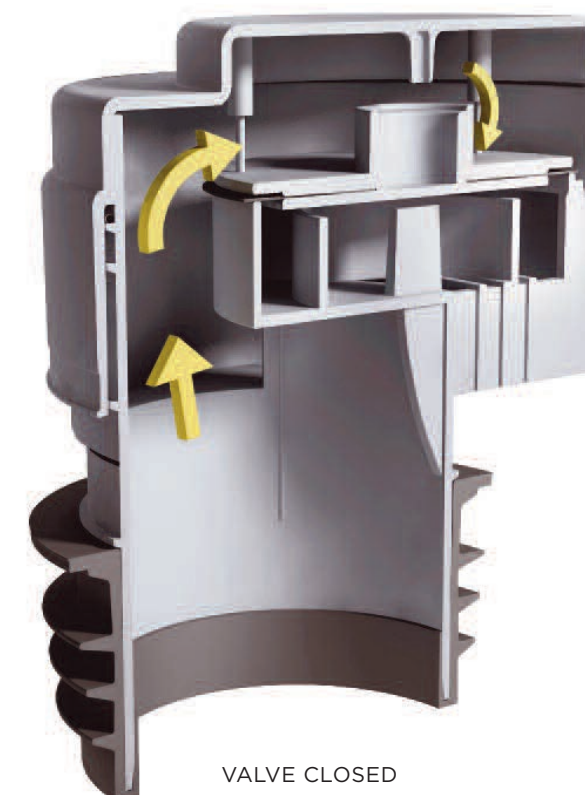
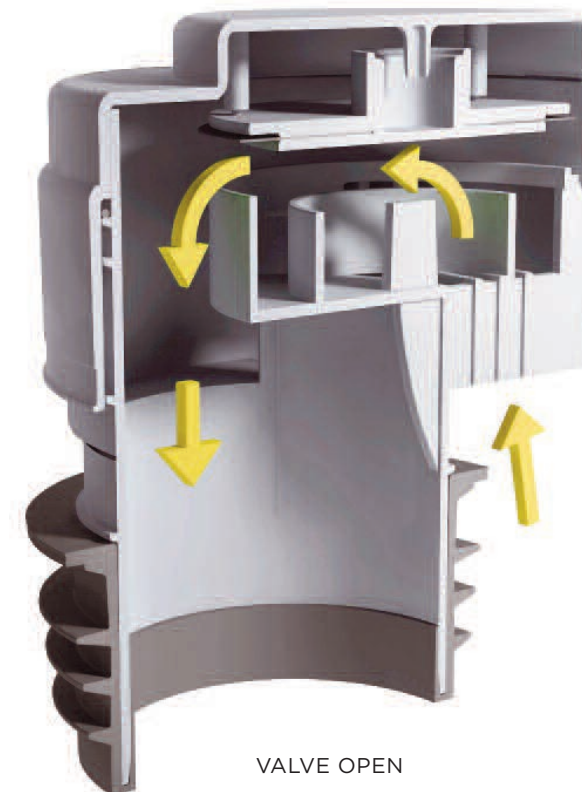
Approved Document H of The Building Regulations 2000 (2002 edition) requires that air admittance valves comply with BS EN 12380:2002. All McAlpine Ventapipe air admittance valves listed have been independently tested by the LGA Testing House and certified as being compliant with BS EN 12380:2002 and designated as Class A1.

This means that Ventapipe can be installed:

- Above or below the flood level of connected appliances
- Ventapipe has an operating temperature range of -20°C to + 60°C
- Ventapipe was granted A1 classification without the necessity of a polystyrene cover
- Ventapipe has been tested at -250 Pa for their air flow capacity and the flow rate is stated alongside each valve listed
- 9L/S airflow capacity



[WATCH VIDEO](#)





# Integrated AAV S&P Trap All-in-one system.

Abey's new S&P Speed Trap will save you time and money. By drawing air through the integrated AAV valve, the system neutralises syphonic pressure before it reaches the seal of the trap. Therefore, it provides the equivalent of a ventilated system without the installation of costly and unsightly ventilation pipes.

- Prevents the release of foul air
- Reduces risk of syphoning
- Can be used in most internal situations
- Allows for greater design flexibility
- Used in both new and existing systems
- For single fixture only

The unique design draws air through the valve and not through the water seal eliminating gurgling for a quieter discharge. Integrated AAV vents internally and eliminates the need for secondary ventilation and additional pipe fabrication.

S&P Speed Trap fittings for 40 and 50mm pipes - allows for greater flexibility in plumbing design.



MORE INFO

Adjustable fittings provide easy adjustability and watertight results.

Extended universal dishwasher inlet with 25mm BSP thread for easier fitting of outlet hose.

Easy fit removable plug for faster installation of dishwasher.



## THE HARD WAY

Old style waste trap installations require ugly, expensive, time consuming fabrication of external vent pipes.



## CONVENTIONAL WAY

To eliminate external ventilation, an AAV can be incorporated but takes up time and valuable cupboard space.



## THE EASY WAY

Abey's 'Speed Trap' with AAV solves the problem. Saves time, saves space, saves unnecessary fabrication.

# All-in-one system sink traps with 135° Swivel Nozzle.

Abey's range of water seal tubular swivel all-in-one trap with multifit 135° outlet make awkward installations a breeze. Available in a range of sizes and configurations to suit 40mm and 50mm. A flexible low cost solution to help solve difficult fabrication or retrofit work when space or access is an issue.

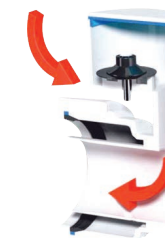
Supplied with 40mm x32FI trap adaptor

Telescopic extendable inlet allows for greater and more flexible adjustment (TP10 and SP40AV models only)

Adjustable fittings provide easy adjustability and watertight results

75mm Water Seal

ZP10WM has extended universal dishwasher inlet with 1" BSP thread for easier fitting of outlet hose. Supplied with a blank plug allowing trap to function as a normal sink trap until appliances are fitted.



SP40AV model incorporates Air Admittance Valve which vents internally and eliminates the need for secondary ventilation and additional fabrication work

\* The unique design draws air through the valve and not through the water seal eliminating gurgling for a quieter discharge

Trap outlet can be swiveled 135° to "P", "S" or "Q" positions

Multifit compression outlet suits all plastic, copper and galvanised pipe



## THE HARD WAY

Old style waste trap installations require ugly, expensive, time consuming fabrication of external vent pipes.



## CONVENTIONAL WAY

To eliminate external ventilation, an AAV can be incorporated but takes up time and valuable cupboard space.



## THE EASY WAY

Abey's 'Speed Trap' with AAV solves the problem. Saves time, saves space, saves unnecessary fabrication.



# Self-Closing One-Way MacValve Waterless Trap, when space is a issue

Abey Australia manufacture and source the best of breed plumbing products the world has to offer. Their range of Fantastic Plastic plumbing products provide plumbers superior quality plumbing solutions to save them time, space and money. Their MacValve range of Self-Closing, One-Way, Waterless Waste Valves (Traps) offer a hi-tech waste pipe solution when working in confined spaces, where traditional traps just won't fit.



When installation space is an issue and traditional traps just don't fit, Abey's McAlpine Self Closing, One-Way Waterless Waste Valve is the answer. A relatively low cost solution that eliminates awkward, messy and time consuming fabrication work and can be fitted horizontally or vertically with a one-way flow valve that prevents back flow and seals out odours and gases.

- Can be fitted in horizontal or vertical position.
- MacValve membranes open under water pressure to allow discharge to flow freely and then close to form a seal to prevent foul odour or sewer gas entering the building.
- MacValves offer a solution to working in confined spaces where traditional traps just won't fit.
- MacValves can be used to take the discharge from a pressure relief valve on an unvented domestic hot water storage system.
- MacValves having no water seal can never dry out through evaporation or lack of use of an appliance as the membrane remains sealed.
- MacValves are not recommended for use with shower trays unless there is access for maintenance.



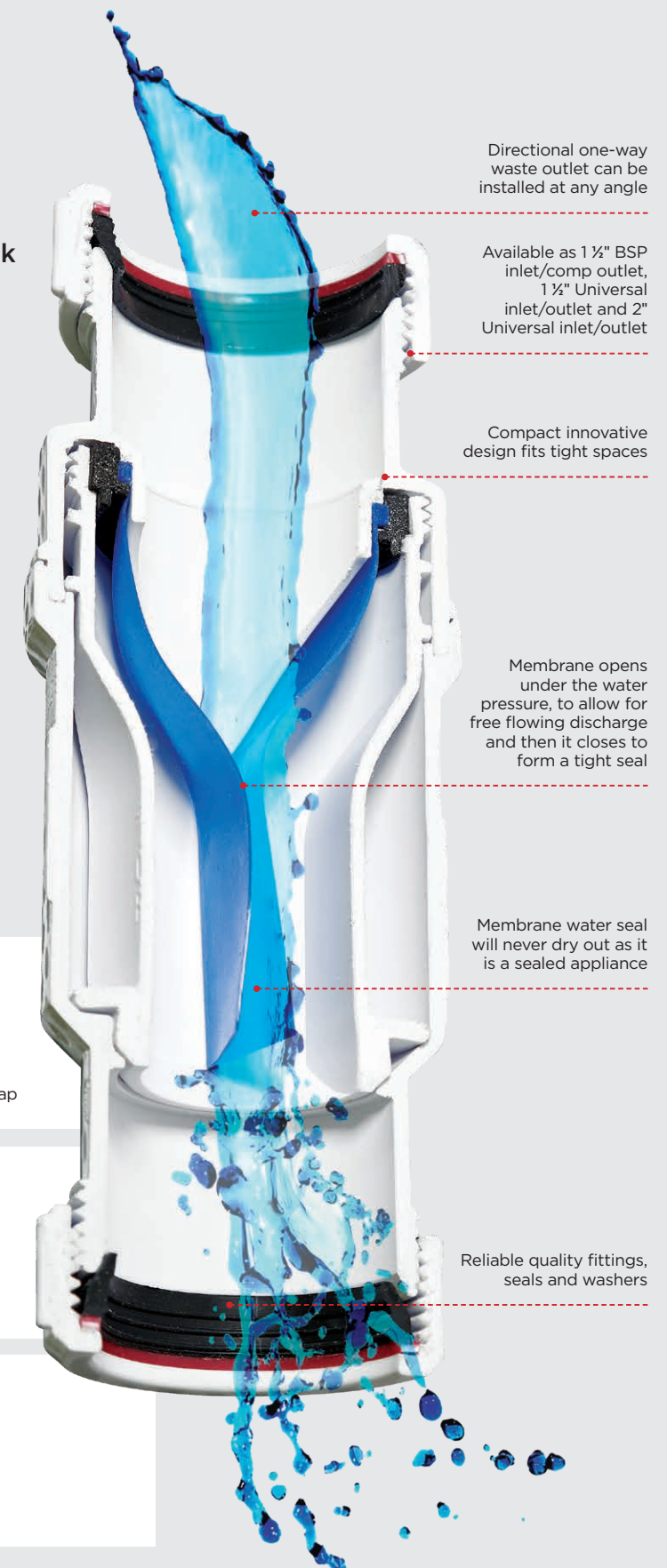
**MACVALVE-2** 1 1/2" BSP Inlet and Compression Outlet Self Sealing Trap



**MACVALVE-5** 1 1/2" Universal Inlet & Outlet Self Sealing Trap



**MACVALVE-20** 2" Universal Inlet & Outlet Self Sealing Trap



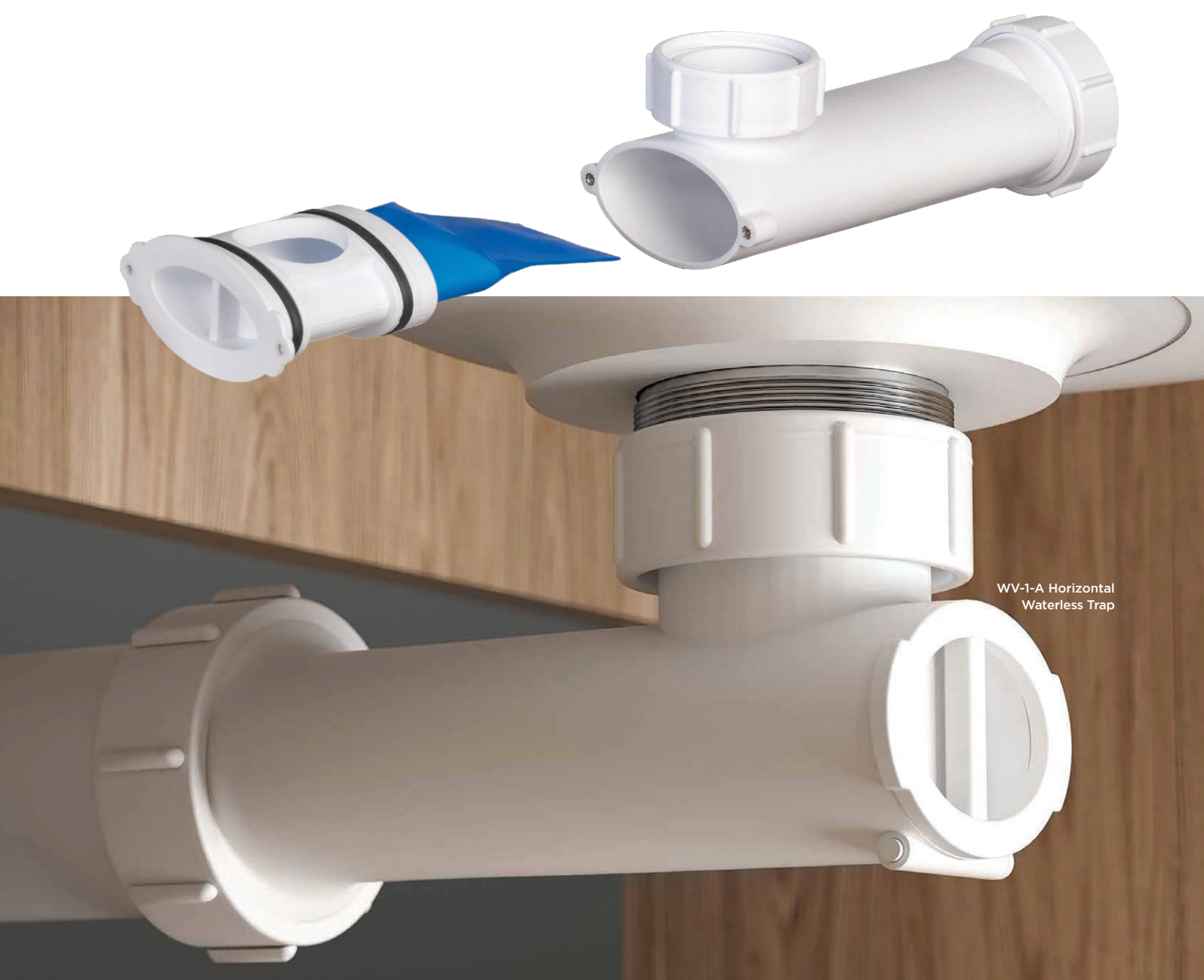
Drain cleaners must never be used with these products as they will damage the membrane. When installing horizontally, the flow arrow must be in the uppermost position. Maximum water temperature 80°C. PATENT PENDING.



# Save space in your bathroom

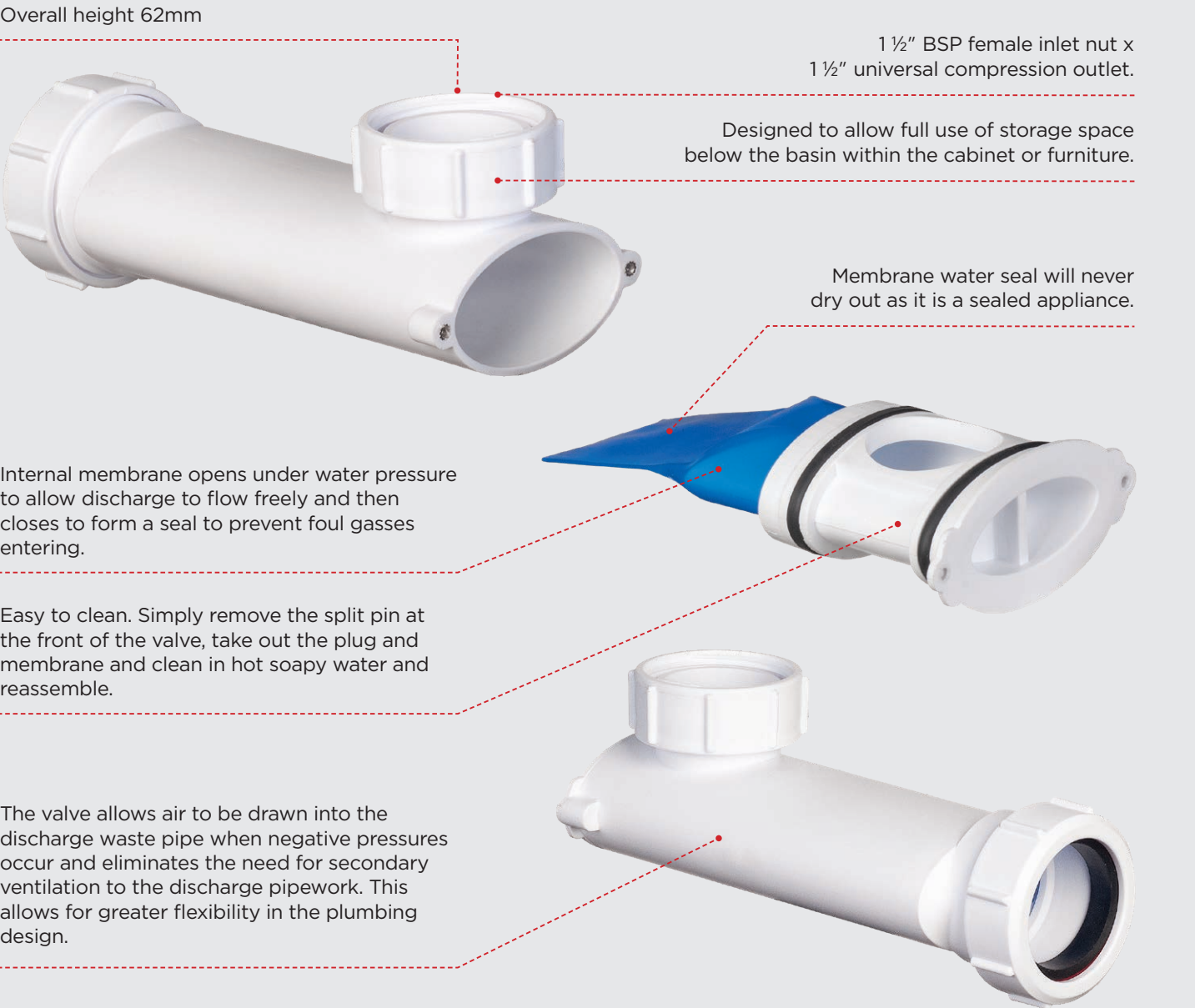
## Horizontal Waterless Trap.

The Self-Closing Space Saver Waste Valve is unlike traditional traps that uses a water trap within a bulky ‘U’ bend pipe, Abey’s Space Save has an internal membrane which opens under water pressure to allow discharge to flow freely and then closes to form a seal to prevent foul odour or sewer gas entering the building.



WV-1-A Horizontal Waterless Trap

Abey’s new Space Saver Horizontal Waterless Trap has been designed for bathroom basins to give you back your valuable vanity space. It can also be used on baths for tight installations. Bulky ugly waste traps are a thing of the past.



Overall height 62mm

1 1/2" BSP female inlet nut x 1 1/2" universal compression outlet.

Designed to allow full use of storage space below the basin within the cabinet or furniture.

Membrane water seal will never dry out as it is a sealed appliance.

Internal membrane opens under water pressure to allow discharge to flow freely and then closes to form a seal to prevent foul gasses entering.

Easy to clean. Simply remove the split pin at the front of the valve, take out the plug and membrane and clean in hot soapy water and reassemble.

The valve allows air to be drawn into the discharge waste pipe when negative pressures occur and eliminates the need for secondary ventilation to the discharge pipework. This allows for greater flexibility in the plumbing design.

NO MORE OF THIS



### PRODUCT DESCRIPTION

**HORIZONTAL WATERLESS TRAP**  
1 1/2" BSP female inlet nut x  
1 1/2" universal compression outlet

### CODE

WV-1-A

AIR ADMITTANCE VALVES & SELF CLOSING WATERLESS TRAPS

PRODUCT DESCRIPTION			CODE
AIR ADMITTANCE VALVES (AAVS) Air Admittance Valve		40/50mm	VPSFN-1.5-2
Air Admittance Valve		50mm	VP50
Air Admittance Valve		100mm	VP100

ABEY'S NEW VENTAPIPE AAVS

ABEY AIR ADMITTANCE AAVs	VPSFN-1.5-2	VP50	VP100	SP40AV	SP50AV	C10AV
Suits DWV pipe size	40/50mm	50mm	100mm	40mm	50mm	40mm
Airflow capacity at -250+/-10pa (litres/sec)	9	10	45	0.3	0.3	0.3
Max. fixture unit loading-discharge pipes	136	168	250	Basin	Sink	Basin

APPLICATION TYPE	TRAP/PIPE SIZE (MM)	FIXTURE UNIT RATING
BASIN	40	1
BATH with or without shower	40	4
BIDET	40	1
SHOWER single	40	2
SHOWER multiple	50	2/head
SINK single or double	50	3
TROUGH single or double	50	5
WASHING MACHINE	40	5
W.C. flush valve	80/100	6
W.C. cistern	80/100	4



SP40AV 40mm S & P trap with air admittance valve



SP50AV 50mm S & P trap with air admittance valve



C10AV 40mm bottle trap with anti-syphon adjustable

BOTTLE TRAPS & SELF-CLOSING WATERLESS TRAPS

PRODUCT DESCRIPTION		CODE	
Horizontal Waterless Trap		WV-1-A	
BOTTLE TRAPS Reseal Adjustable Bottle Trap		CP 32-40mm	BT40A-CP
Bottle Trap with Anti-syphon Adjustable		40mm	C10AV
Bottle Trap 360mm Pipe		Chrome	WC10
		Black	WC10-B
		Brushed Nickel	WC10-BN
SELF-CLOSING ONE WAY WATERLESS TRAPS 1 1/2" BSP Inlet and Compression Outlet Self Sealing Trap		MACVALVE-2	
90 degree Bend 1 1/2" Female inlet x 1 1/2" BSP Male Connector to suit MACVALVE-2		T4U	
1 1/2" Universal Inlet & Outlet Self Sealing Trap		MACVALVE-5	
2" Universal Inlet & Outlet Self Sealing Trap		MACVALVE-20	

WC CONNECTORS

PRODUCT DESCRIPTION	CODE		
WC CONNECTORS WC Straight Connector			WC-CON1
Offset Connector 20mm		20mm offset	WC-CON4
Offset WC Connector		0mm offset	WC-CON4A
Space Saving Pan Bend			WC-CONQ

McAlpine Redback Kneepads.  
Pain relief for knees that work.

Redbacks® award winning knee pads have been scientifically proven to outperform foam knee pads by Professors at Staffordshire University.

Redbacks patented system uses patented flexible leaf spring technology where the leaf spring is embedded within a honeycomb matrix to absorb and spread weight. Unlike any other kneepads the technology disperses pressure away from the knee to provide unrivalled comfort and protection.

Unlike Foam and Gel, McAlpine Kneepads have 100% recovery. The kneepads are breathable, and when washed do not have to be extracted from your workwear trousers.



< KP-S >  
The heavy duty ones you strap on, and you're good to go.



**MALPINE**

**Abey<sup>AU</sup>**

**ABEY AUSTRALIA LTD | VIC 03 9747 7777 | NSW 02 8572 8572**  
**QLD 07 3805 7000 | WA 08 9446 8255 | SA 1800 809 143**

**[abeytrade.com.au](http://abeytrade.com.au)**